

HYDRO SERIES

ADJUSTABLE HEIGHT BEARINGS

Installation Instructions: N3743-2A Internal Hydraulic Bearing

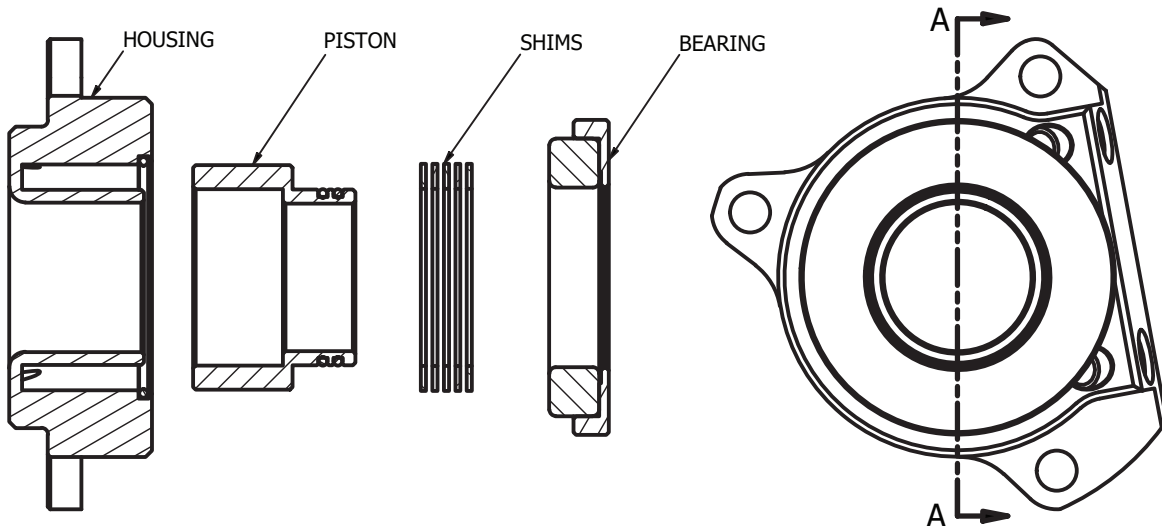
The N3743-2A internal hydraulic bearing is engineered as a "plug-and-play" solution for most OEM applications and Clutch Masters clutch kits. Before completing installation, it is essential to measure the air gap to ensure proper travel and prevent hydraulic system leaks. The bearing provides a maximum piston travel stroke of 0.600", which is suitable for most clutch applications.



Air Gap Link: <https://clutchmasters.com/file/29-Hydraulic+Release+Bearing+Air+Gap+Shimming+Instructions.pdf>

Shim Installation: (if required)

If shims are necessary, install them over the piston and between the piston and the roller bearing. The roller bearing assembly can typically be removed by hand or gently pried off using a flat-head screwdriver. Once removed, up to 0.200" of shims may be installed onto the piston. Do not exceed 0.200" of shims, as this may cause premature roller bearing failure. After installing the correct amount of shims, reinstall the roller bearing onto the piston by hand, ensuring a snug and secure fit.



IMPORTANT:
Shims must be placed between the bearing and the piston as shown in this diagram!

Final Installation:

Once the correct bearing height has been achieved, mount the bearing onto the transmission and complete the installation process.



Clutch Masters Industries, Inc.
clutchmasters.com (909) 877-6800



Attention:

The installation of this product must be performed by a qualified mechanic or one who is considered to be mechanically inclined. It is highly recommended to follow the guidelines within the factory service manual along with this information guide.